

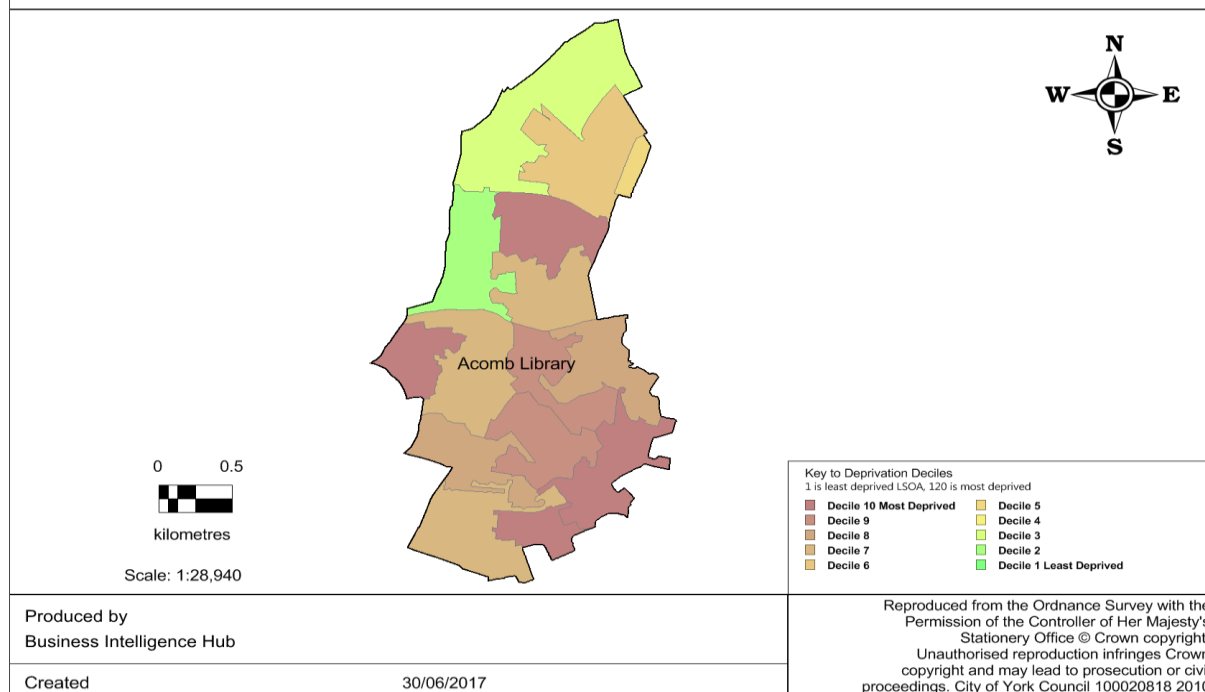
Acomb Library Catchment Area



York Summary

- York has 208,367 residents with 5.7% from a black and minority ethnic community group. 83.9% are in good health, with 15.3% stating that they have some limitation in day to day activities.
- 66% own their own home, either outright or with a mortgage, 18% are private renters and 14% are social tenants.
- 73.5% of residents have a NVQ level 1 - 4 qualification and 18.0% have no qualifications at all.
- 9.7% of children live in poverty (7.8% of children live in a household where a parent or guardian claims an out-of-work benefit) and there are 11.5% of households in fuel poverty.
- 1.7% of the working population (aged 16-64) claim out of work benefits and 0.2% claim job seekers allowance.

Index of Multiple Deprivation 2015 - Acomb Library: breakdown by LSOA



Acomb Library: Summary

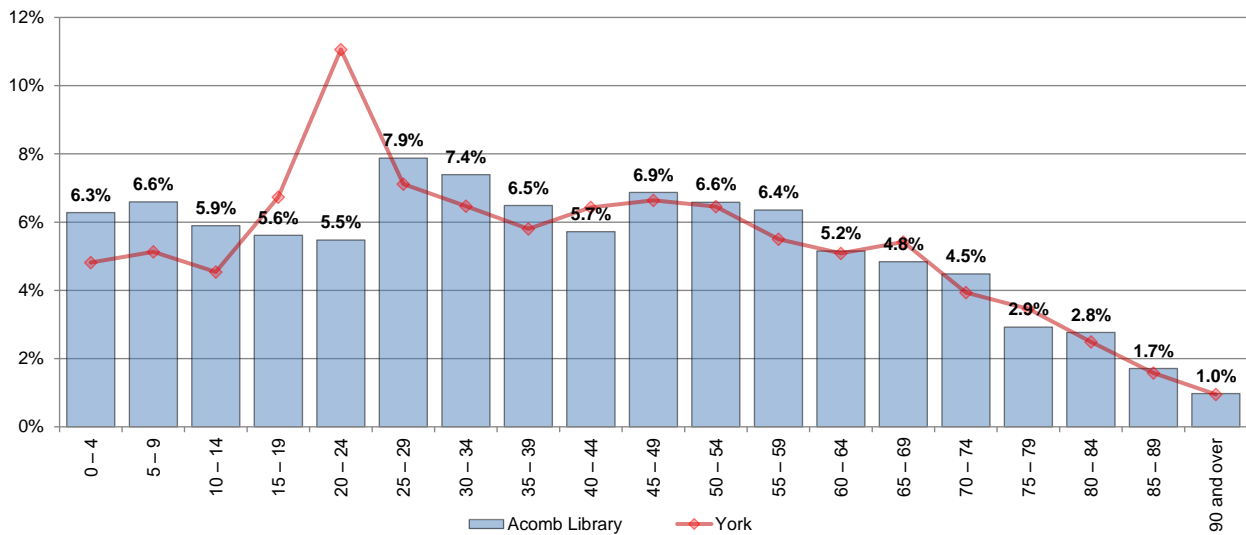
Includes the following wards: Acomb, Westfield.

- Acomb Library catchment has 23,440 residents with 5.19% from a black and minority ethnic community group. 80.2% are in good health, with 18.2% stating that they have some limitation in day to day activities.
- 64% own their own home, either outright or with a mortgage, 9% are private renters and 25% are social tenants.
- 64.3% of residents have a NVQ level 1 - 4 qualification and 26.2% have no qualifications at all.
- 15.1% of children live in poverty and there are 9.9% of households in fuel poverty.
- 0.6% of the working population claim out of work benefits and 0.2% claim job seekers allowance.

Acomb Library Catchment Area



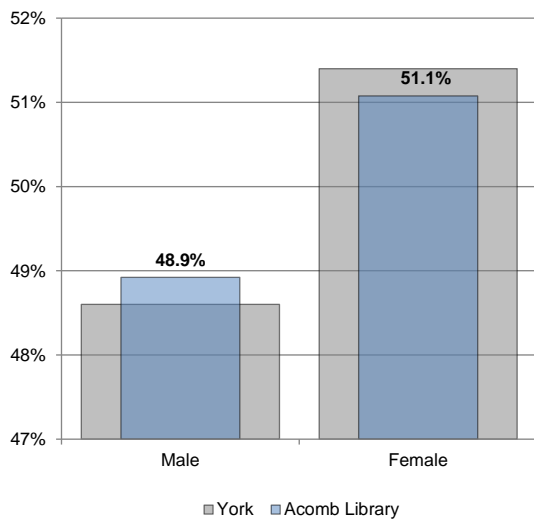
Population by Age



Source: ONS - 2017 Ward Population Estimates

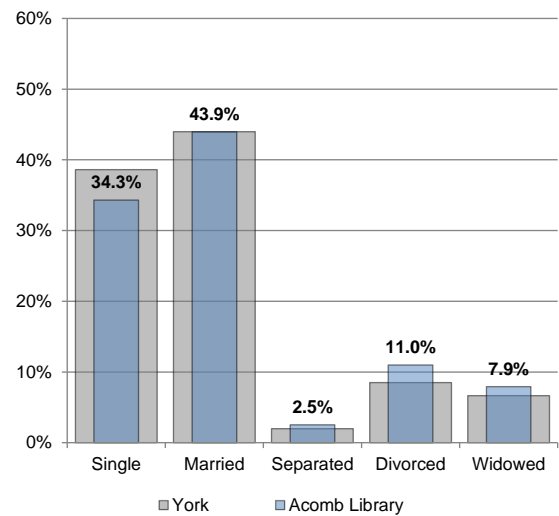
Census 2011 Update

Gender



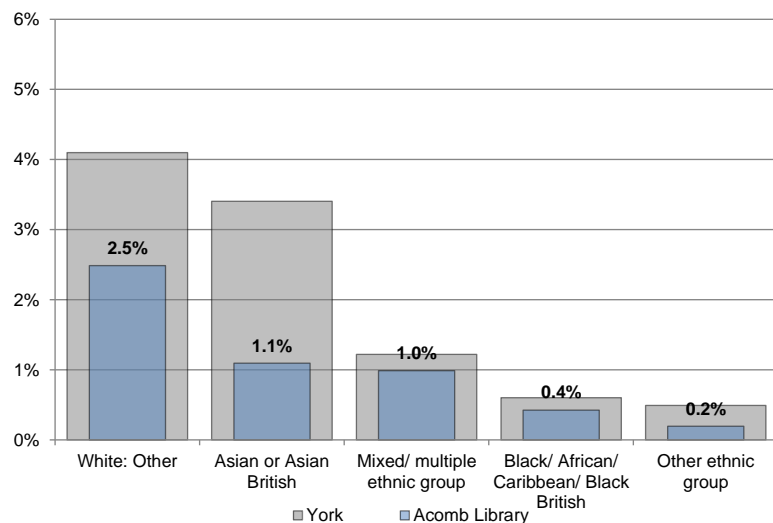
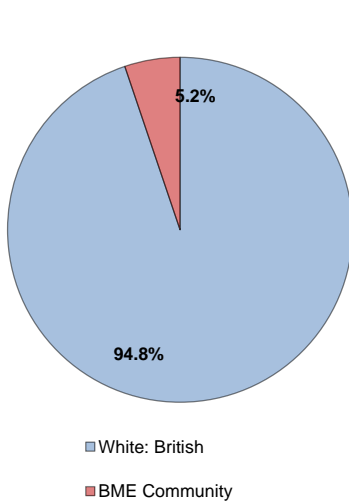
Source: Census 2011

Marital Status



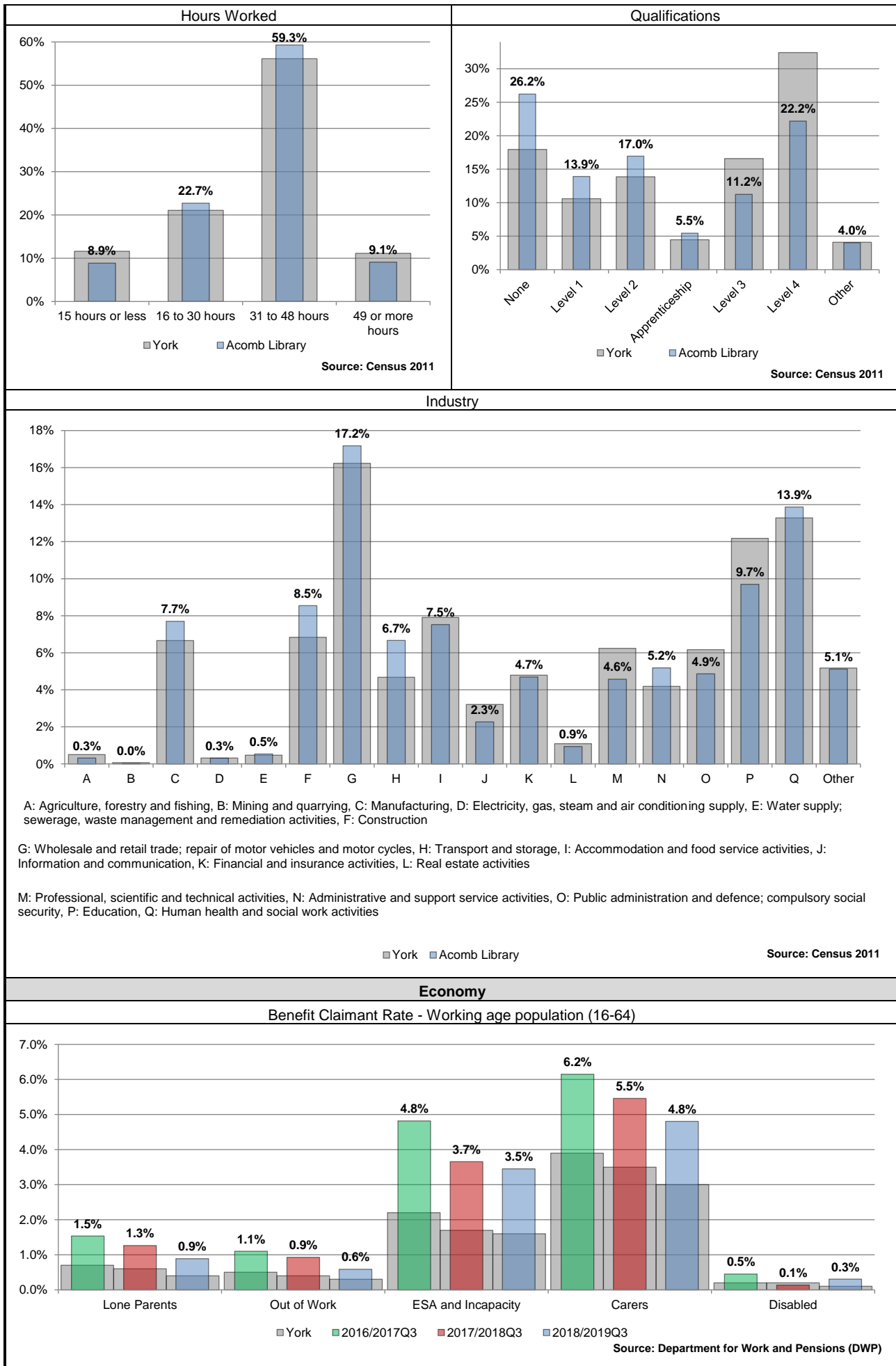
Source: Census 2011

Ethnicity



Source: Census 2011

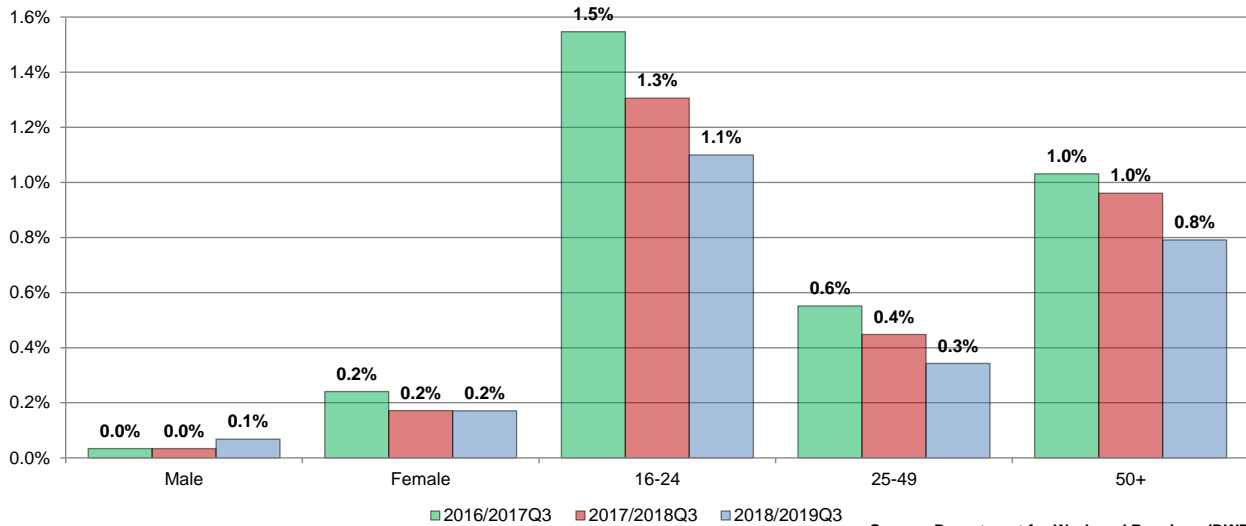
Acomb Library Catchment Area



Acomb Library Catchment Area

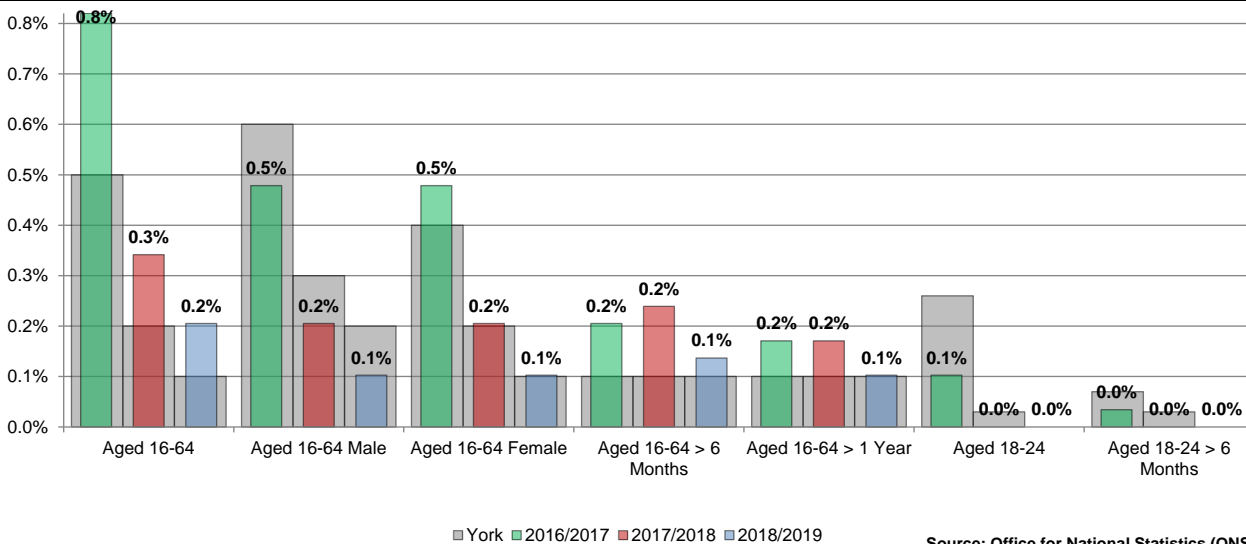


Total Benefit Claimant Rate by Age and Gender - Working age population (16-64)



Source: Department for Work and Pensions (DWP)

JSA Claimant Rate by Age and Gender - Working age population (16-64)

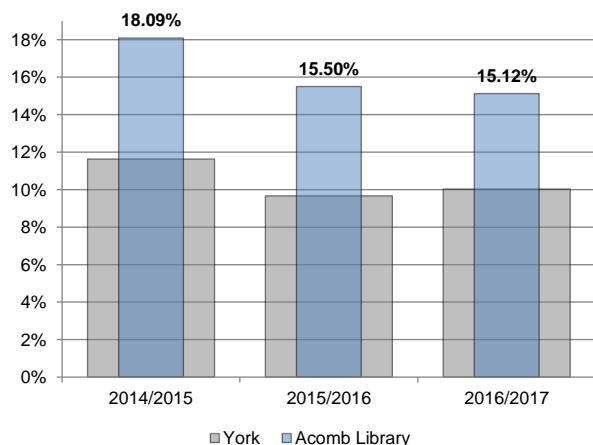


Source: Office for National Statistics (ONS)

Poverty

Children in Poverty

The proportion of children living in families in receipt of out-of-work (means-tested) benefits or in receipt of tax credits where their reported income is less than 60 per cent of UK median income.

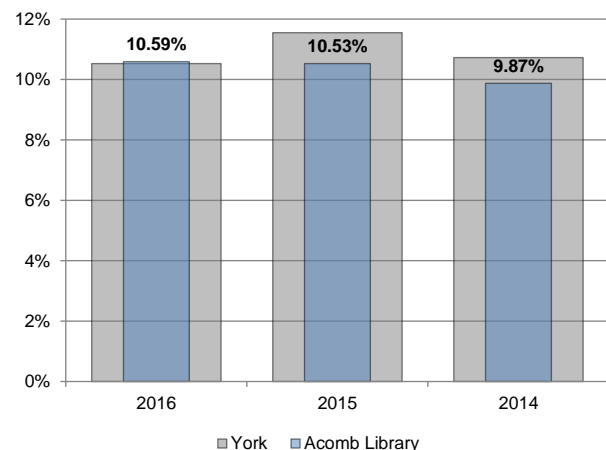


Source: HM Revenue & Customs

Fuel Poverty

The Low Income High Costs indicator is a twin indicator consisting of:

- the number of households that have both low incomes and high fuel costs; and
- the depth of fuel poverty amongst these fuel poor households. This is measured through a fuel poverty gap which represents the difference between the required fuel costs for each household and the median required fuel costs.



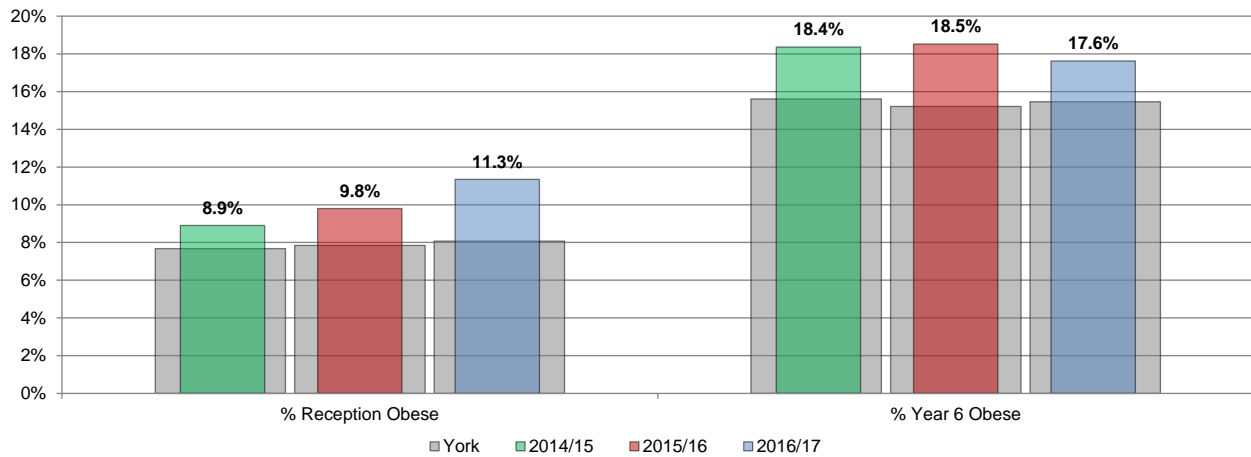
Source: Department of Energy & Climate Change

Acomb Library Catchment Area

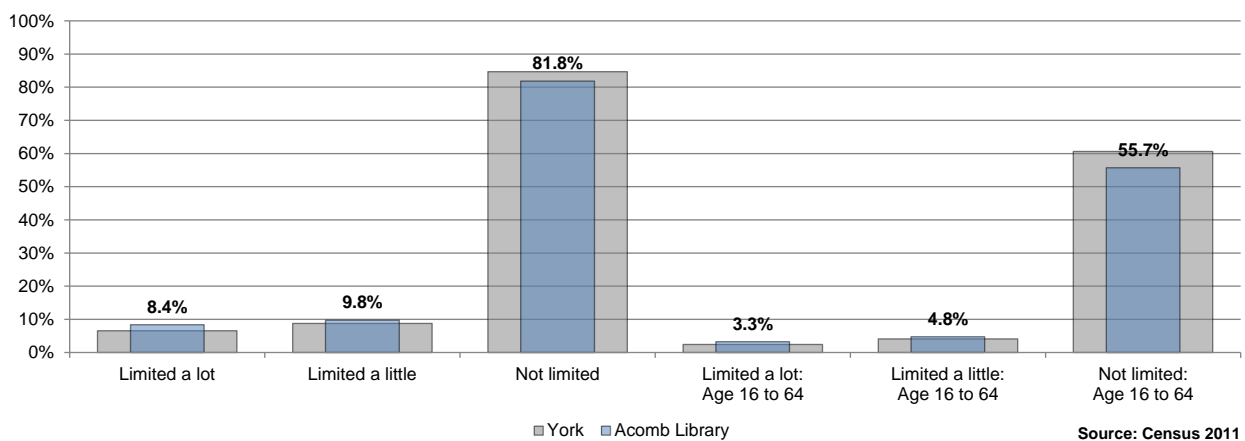


Health and Wellbeing

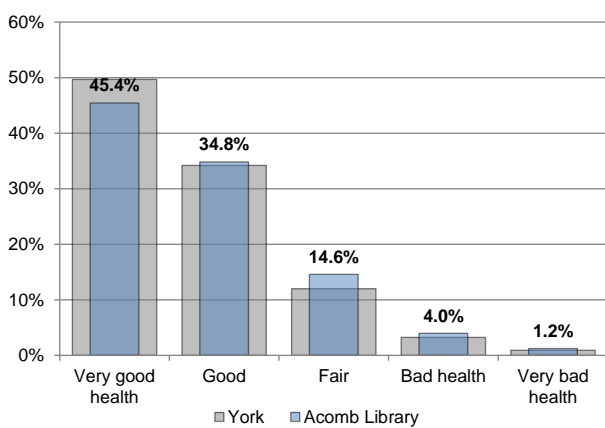
Childhood Obesity



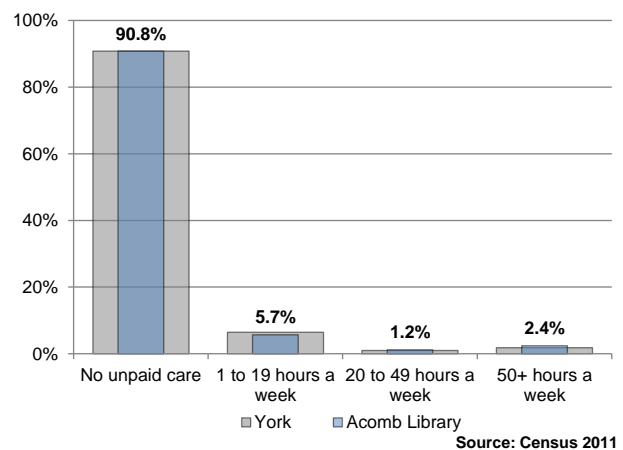
Day to Day Activities



General Health

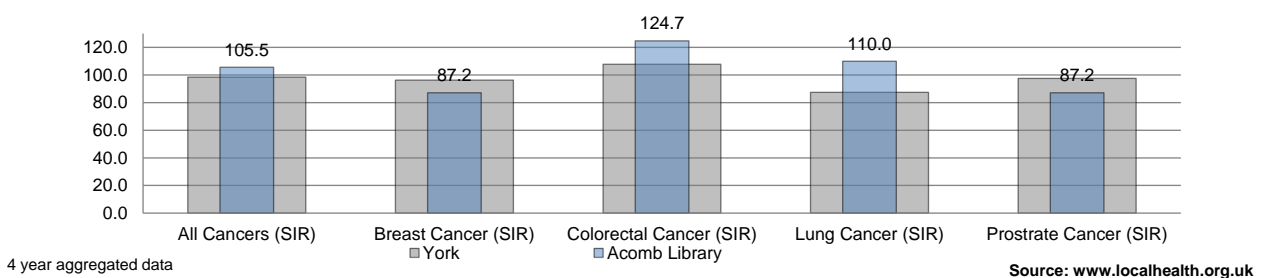


Provide Unpaid Care



Public Health Data

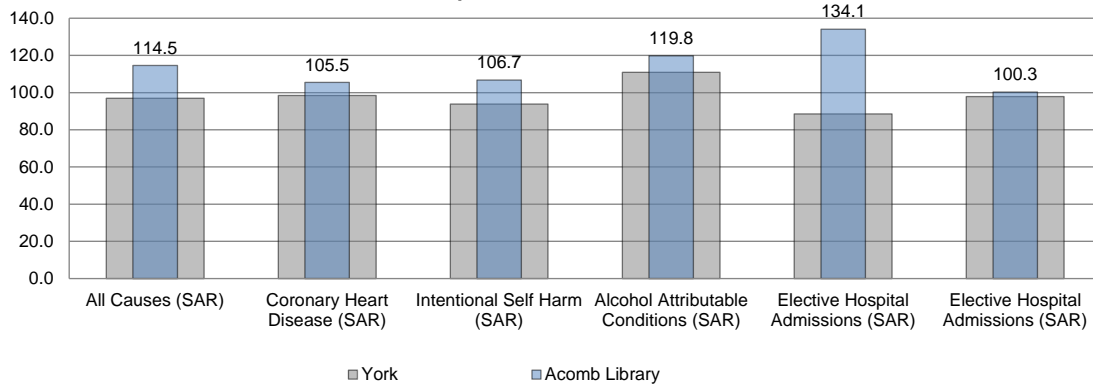
New Cases of Cancer



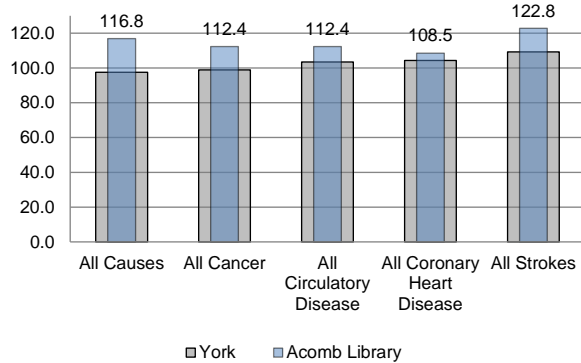
Acomb Library Catchment Area



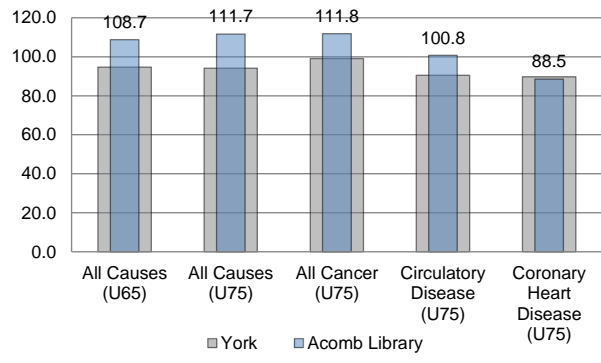
Hospital Admissions



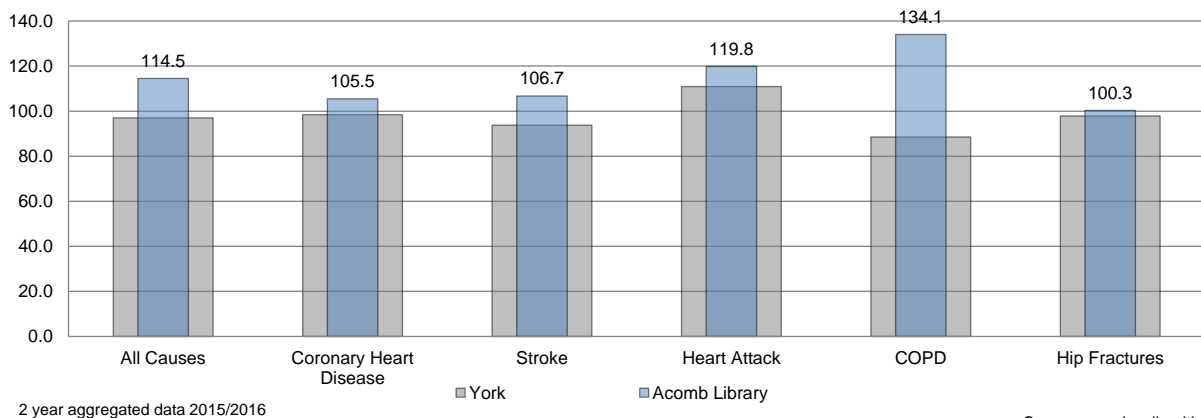
Mortality



Premature Mortality

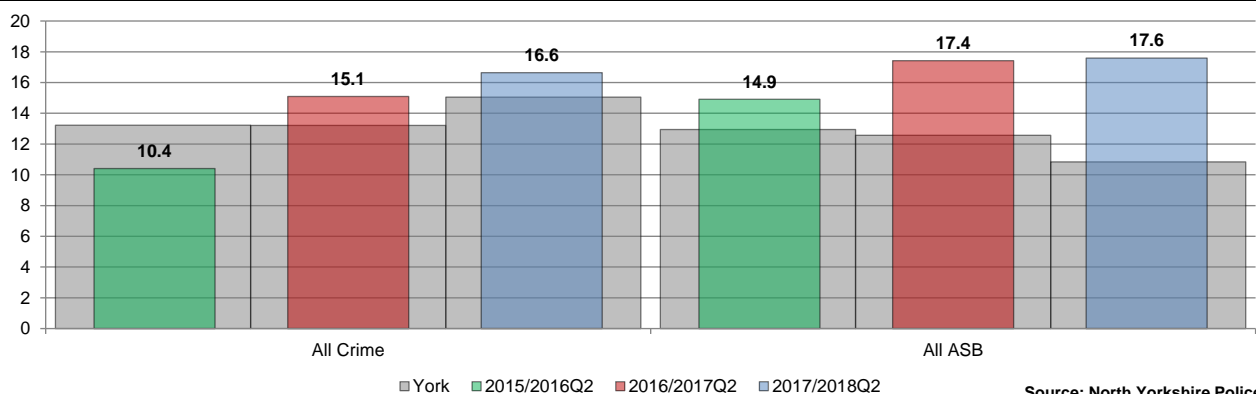


Emergency Hospital Admissions



Crime and Anti-Social Behaviour

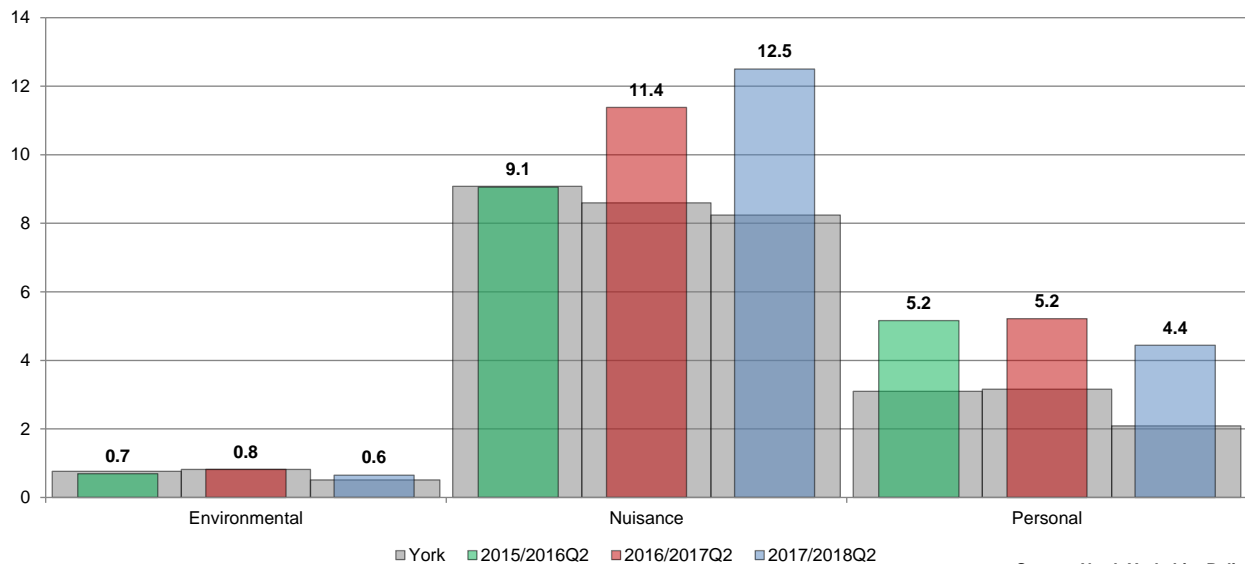
Total Crime and Total Anti-Social Behaviour per 1,000 population



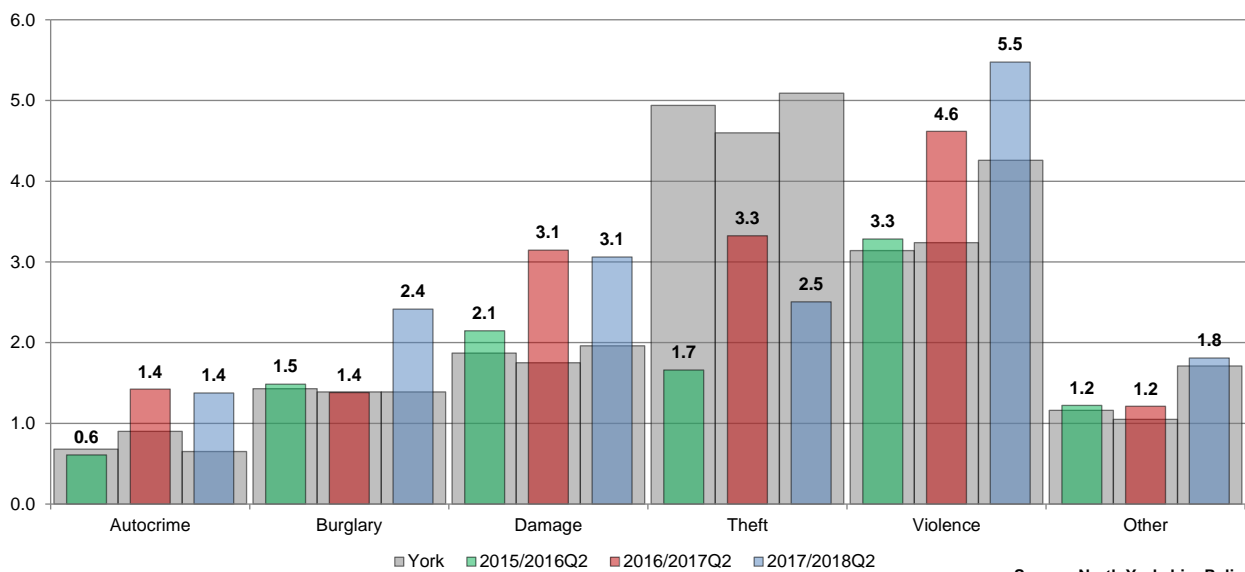
Acomb Library Catchment Area



Anti-Social Behaviour per 1,000 population

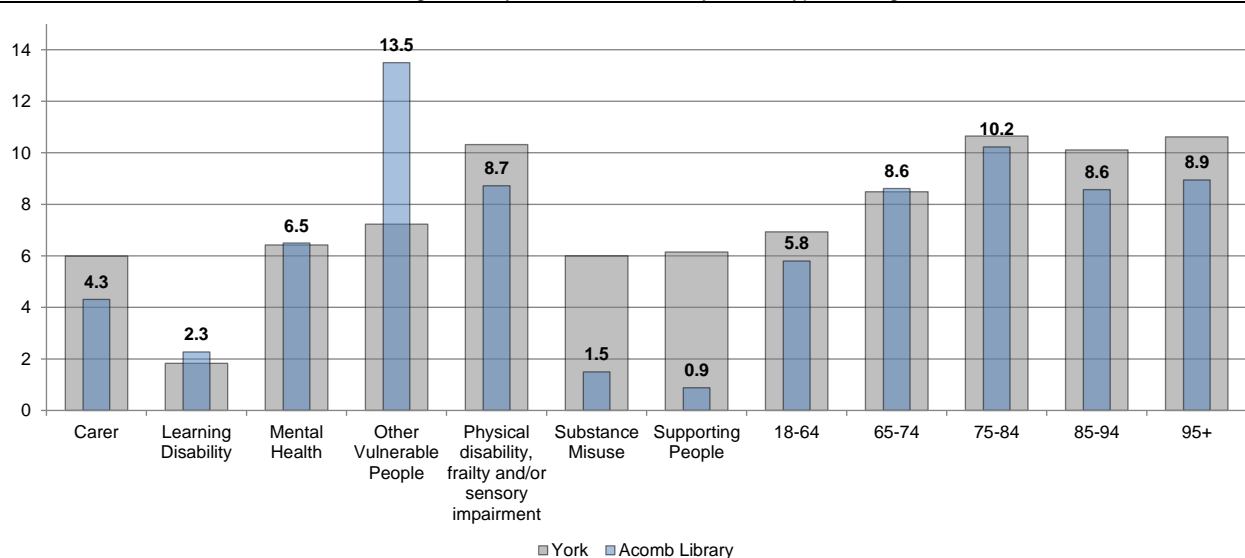


Crime rate per 1,000 population



Adult Social Care

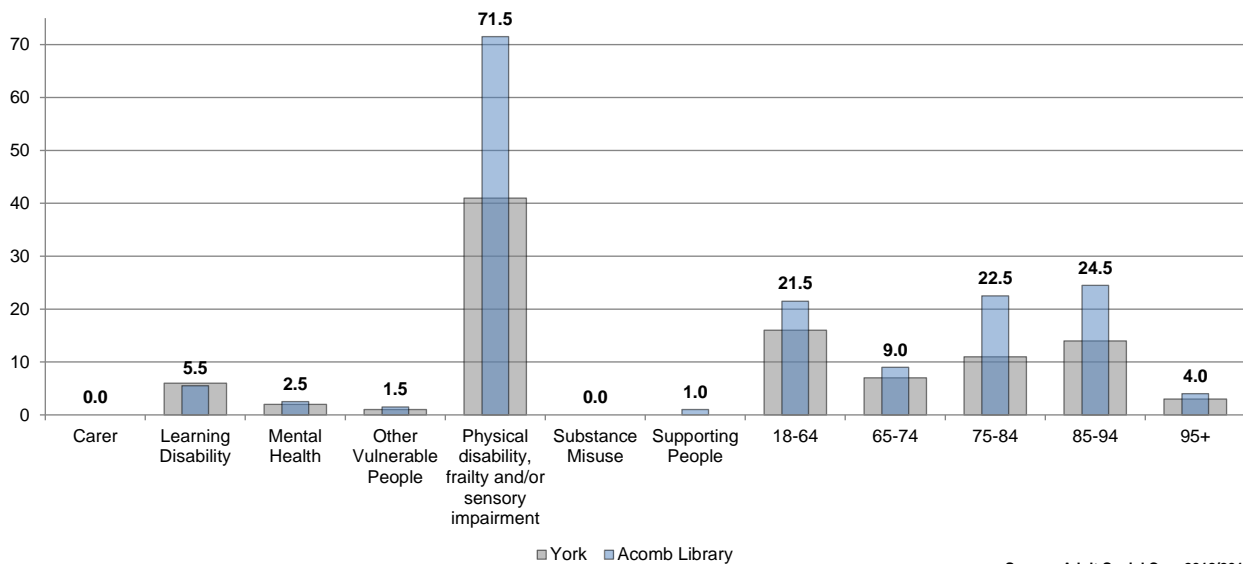
Average Weekly Homecare Hours by Client Type and Age



Acomb Library Catchment Area



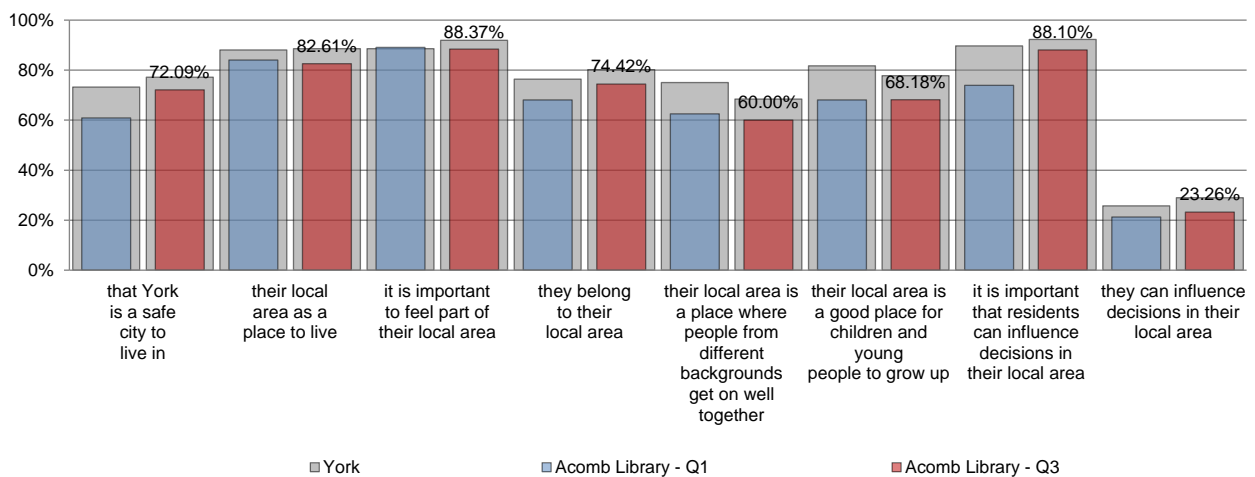
Average Number of Homecare Clients by Type and Age



Resident Engagement

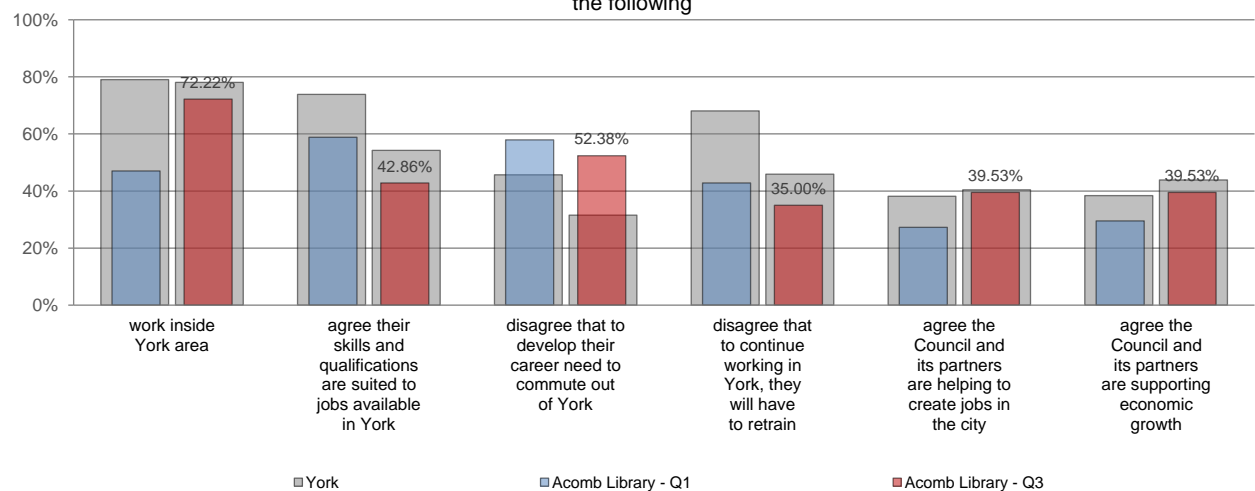
Resident satisfaction responses about their local area

Respondents were asked to consider their local area as the area within 15-20 minutes walking distance from their home



Resident responses about the local economy

Respondents who are retired or not working due to long term illness or disability were unable to answer the following

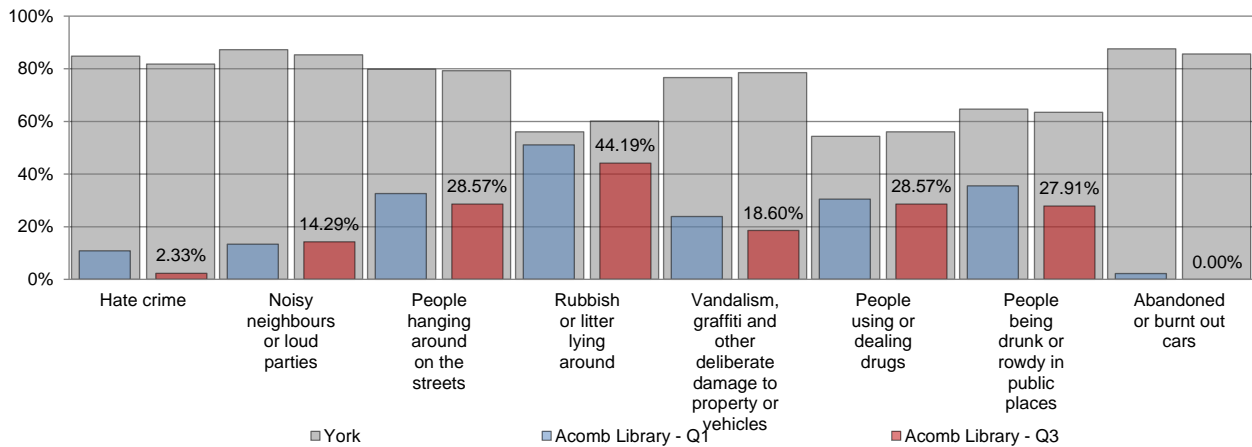


Acomb Library Catchment Area



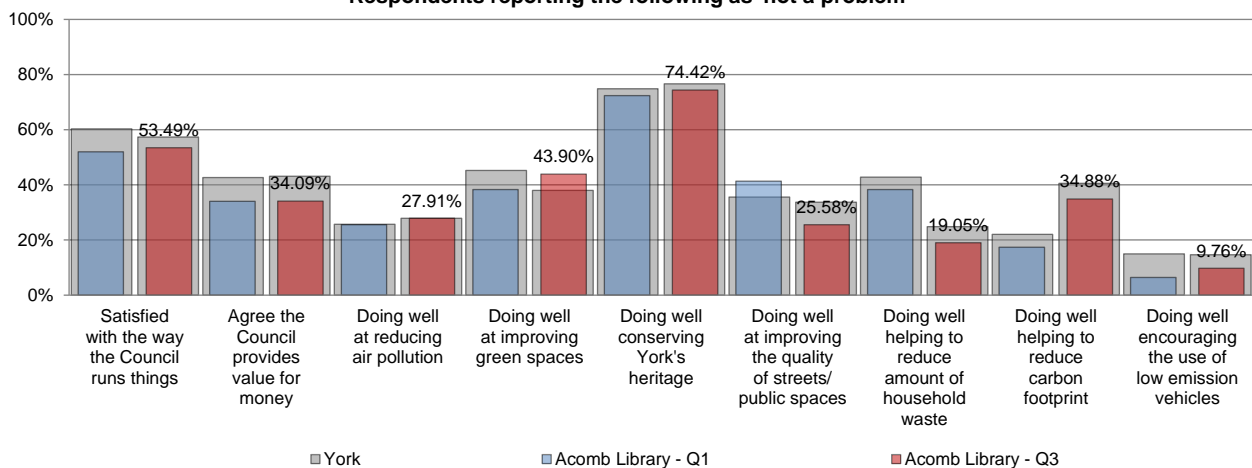
Resident satisfaction responses about Public Realm in their Local Area

Respondents reporting the following as 'not a problem'



Source: Talkabout Survey - Q1 + Q3 2018/2019

Respondents reporting the following as 'not a problem'



Source: Talkabout Survey - Q1 + Q3 2018/2019

Public Health

Please note that those library profiles which have more than one individual ward (listed on page 1) associated with them, have been produced using aggregated data.