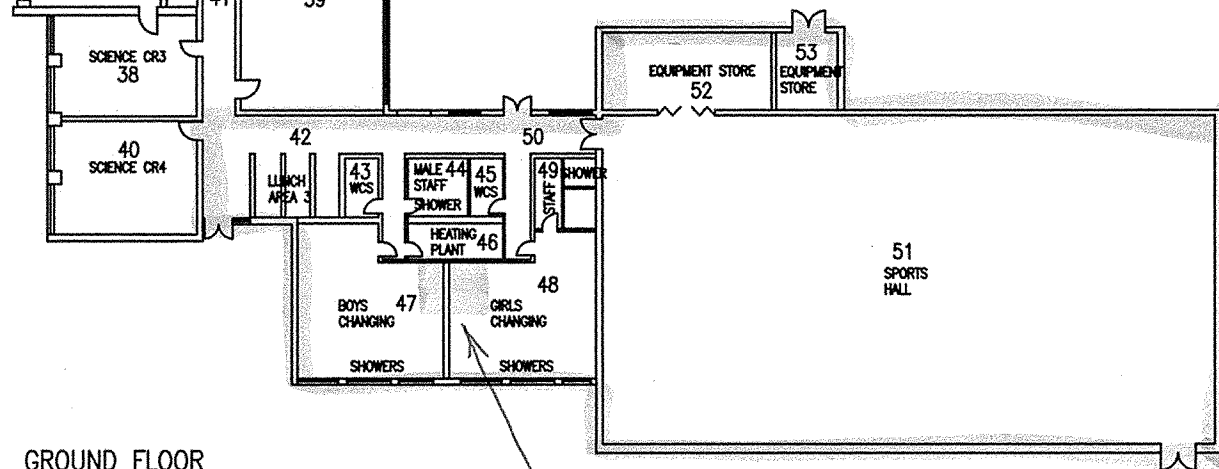
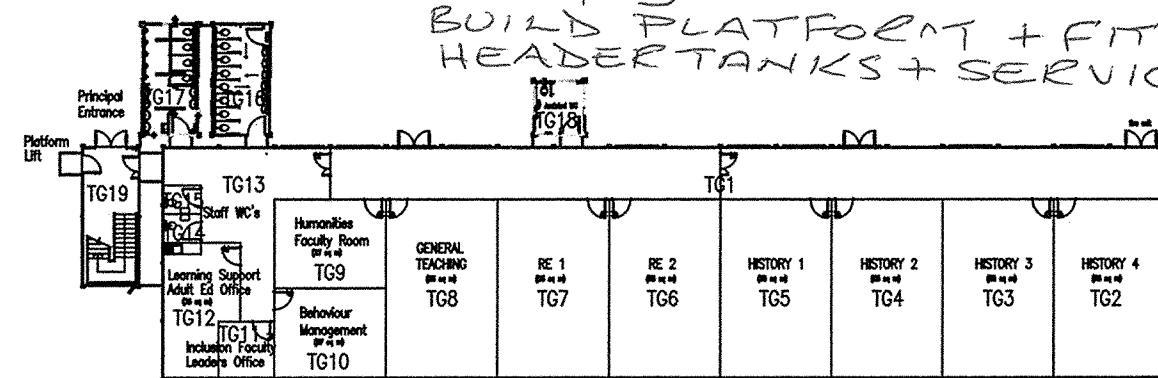
York High School
Lowfields Site

Mechanical Recovery Plan

1. Mechanical pipework services to be cut to the fire side of the steel beam retained at the caretakers office to enable demolition (marked in red on drawing cut services here)
2. Build structural scaffold tower from the hall stage access door to 1m below the top of the chimney. This tower is to carry new Hotwater (1 tonne – 1000litre) and Heating (500 kg – 500litre) header tanks. Provide Tanks and bring services from existing plantroom 50 MDPE to 40 ball valve in HWS header tank, 32 ball valve in Heating Header tank. Outlets from tanks to connect to existing services in plantroom. Insulate tanks and pipes exposed to outside air.
3. Build a platform to carry header tanks straddling the walls above boys girls change (subject to structural engineers OK) for new Hotwater (500 kg – 500litre) and Heating (200 kg – 250litre) header tanks. Provide Tanks and bring services from existing service 32 MDPE to 25 ball valve in HWS header tank, 22 ball valve in Heating Header tank. Outlets from tanks to connect to existing services in plantroom. Insulate tanks and pipes exposed to outside air.
4. After demolition cap all cut services at red line on drawing, pressure test and bring back into use sterilize all HWS & CWS services.
5. Check all WCs have water, if not connect to MCW.

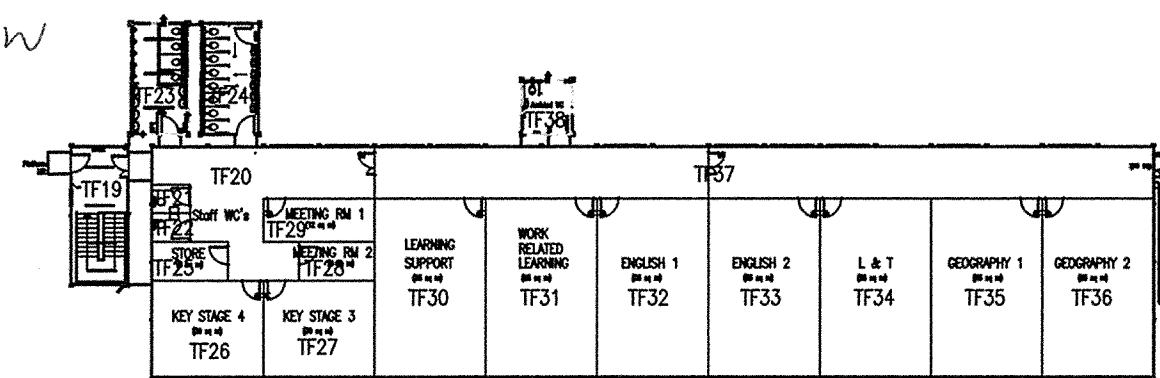


GROUND FLOOR



GROUND FLOOR PLAN

NEW TEMPORARY ACCOMMODATION



FIRST FLOOR PLAN

NOTE:
THIS DRAWING WAS
PRODUCED FROM A
SCANNED IMAGE.

MECHANICAL RECOVERY PLAN

This will bring back into use the area marked blue around the sports hall.
All areas above the red line.